

Pilgrim Paths

Chipping Norton Deanery

Great Tew to Little Tew Circular Walk 3.6 Miles

A pilgrimage is a spiritual journey to a sacred place

This leaflet offers Bible passages and reflections to accompany your journey, with suggestions of places to pause. You may not be used to this type of walking, so when the text suggests a prayer, feel free to use this in a way that seems right for you. Please allow much more time than you would usually spend on a walk to be able to pause and take in the suggested ideas. We would think you need three hours or maybe longer.

The circular walk includes some road walking, footpaths through fields and up hills, negotiating kissing gates, but no stiles.

Park on the road by the church gate and vicarage rather than in the car-park down in the village.

The Church of St Michael and All Angels

Preparing : Inside the Church

Originally Norman, the church was rebuilt and enlarged between the 13th and 14th centuries, and then again in the 19th century.



Can you spot
Beautifully
carved zig-zag
carvings

You enter the church through a beautifully carved Norman doorway, decorated with traditional zig-zag carvings. The columns flanking the doorway have wonderfully carved capitals with foliage patterns.



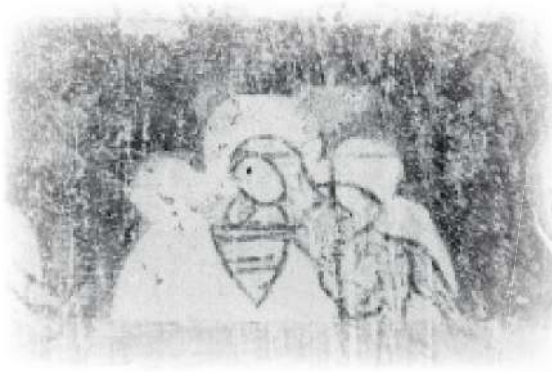
Look . .

Look for a fascinating series of paintings on the south aisle wall, which is primarily in black, red, and pink, and dates to the 14th century.

There are a variety of scenes in this series which include several from the last week of Jesus' life which is often referred to as the Passion.

Can you find; the entry into Jerusalem, washing of feet, crowning with thorns, Pontius Pilate, carrying the cross, Crucifixion, Resurrection, and some more?





And how about this curious figure
amidst the paintings!



Pause Here

Take a moment to be still and take note of your presence in this place.

Throughout this walk you will be encouraged to pause and notice yourself in your surroundings. The prayer below suggests a way of travel that is more than a physical journey.

The World Peace Prayer

Lead me from death to life, from falsehood to truth.

Lead me from despair to hope, from fear to trust.

Lead me from hate to love, from war to peace.

Let peace fill our hearts, our world, our universe.

Amen.





Starting Out

From the church, **return** to the gateway on the road. The gate may originally have been erected by Lucius Carey, Viscount Falkland, who served as Secretary of State to Charles I. Carey laid out the sunken gardens and carriage ride that now serves as the footpath to the church. From this handsome stone gateway, turn **left** and walk up the road. On reaching the grass triangle at the T-junction, bear **left** and **cross** the road to a track signed "Circular Walk". Follow this path into a field, keeping the tree belt on your **right** and noting the ruined walled gardens beyond it.



Pause Here

Great Tew is a cluster of attractive honey-coloured ironstone cottages, most of them thatched, belonging to the Great Tew Estate. Over the last 40 years it has been restored from dereliction and now is a complete Cotswold delight.



Here, as you walk, you can see a reminder of the decay in the walls that have yet to be restored. Knowing this story of renewal gives us a spring in our step!

This place is cared for by the owners who love and know it well.



Psalm 139

The Psalm chosen to accompany our pilgrimage is one that speaks of God as one who loves and knows us well.

Psalm 139 (This version is a paraphrase)

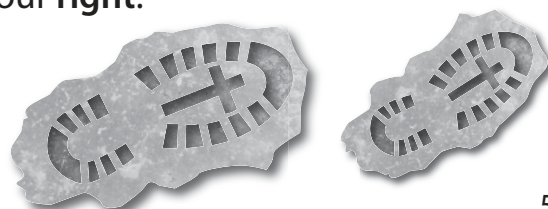
*God, You know my heart – You have searched me –
You have restored me to myself as you discern my intentions.*

Whatever ruins we may recognise in our own life, the Psalm suggests that there is always a way that will bring restoration. You may wish to think about something you regret and how you might come to terms with this?

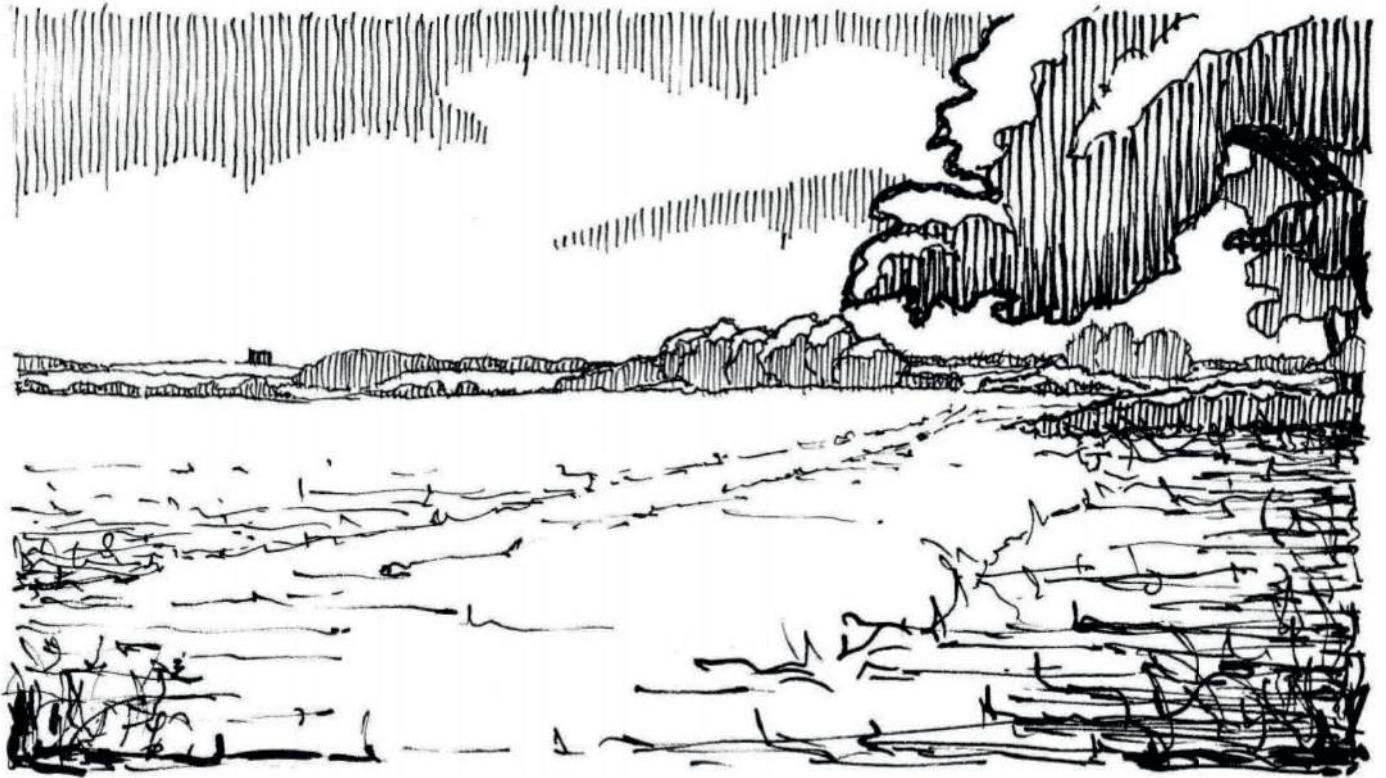


At the end of the first field, bear slightly **right** and continue to follow the field margins through two more fields, always keeping the hedge to your **right**.

Here the path opens up and the walking is easy.



Continue



At the bottom of the hill, go through a pedestrian gateway in the **corner** of the field; turn **right** and then, just before the metal gate, turn **left** and cross the valley and stream on the new permissive path.



Pause Here

You may like to pick up a stone or a twig and find a place to let it go, perhaps in the stream, if you are able to move on from the regret from your past.

Psalm 139 continues

*Knowing my every move, when I wake and fall asleep
and all between, you know my thoughts.
Not only my thoughts, but my ways are known to you.
You have planned all my paths, and you know exactly
where I will turn.*

Regret



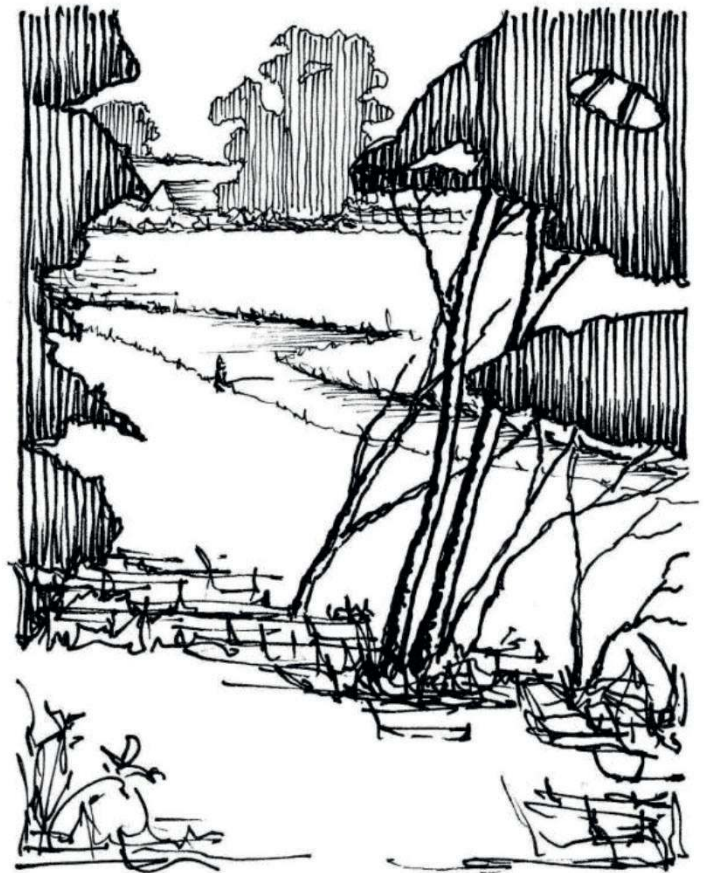
Gate

Go **through** the gate on the opposite side and turn **right**, again following the field margin with the hedge on your **right**. You will eventually join a drive.



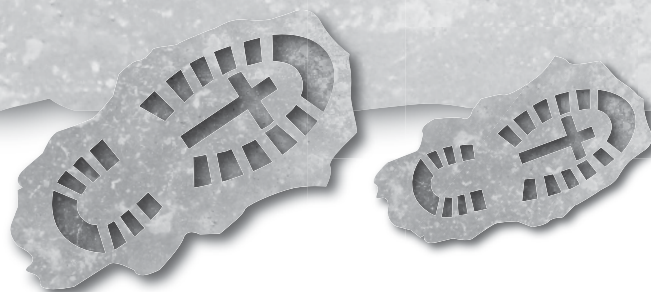
Note two handsome barn conversions on the opposite side of the stream. You may also see swans on the pond.

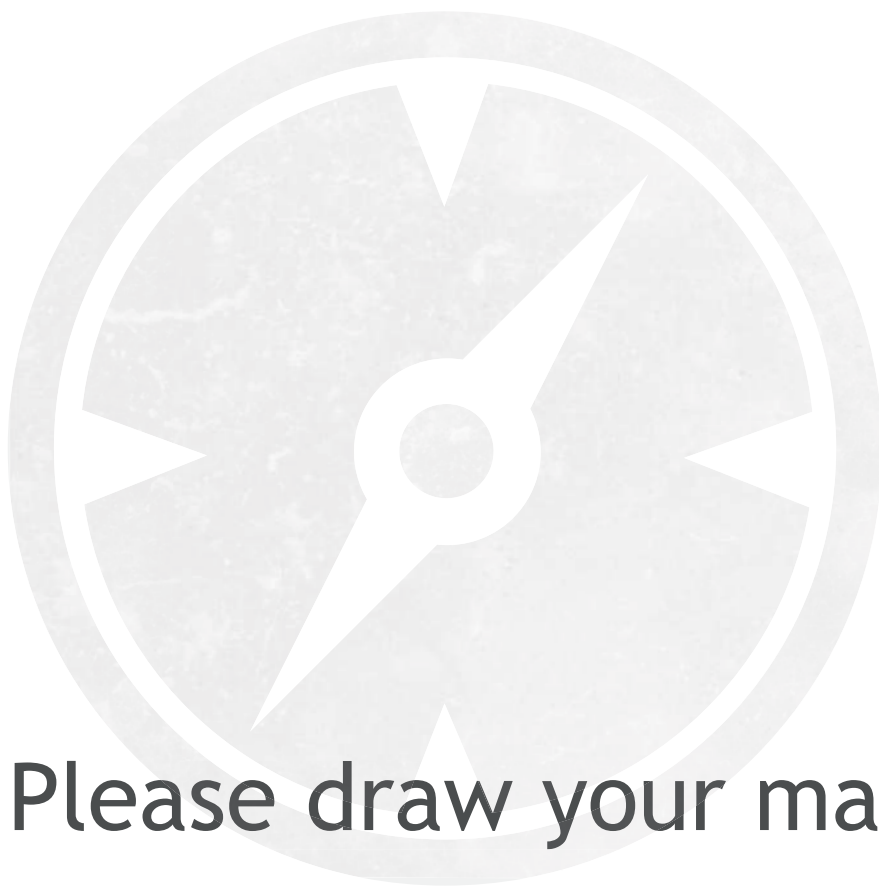
If you look closely, you may spy a small, bearded fisherman.....!



At the end of the drive, **cross** the B4022 (beware of fast-moving traffic) and **continue** along the drive opposite, following the valley as before. Where the drive veers **right** across the stream to a house, **leave** it and **continue straight** on through a long narrow paddock to a metal field gate. Still keeping the stream on your right, continue along the margin of a further field to reach a narrow road. Turn **right**, cross the bridge and walk up the lane into **Little Tew**. Follow this lane as it winds down through the village, and you will find the Church of St John the Evangelist on your **left** at the T-junction.

St. John the Evangelist was the writer of the Gospel that starts, "In the beginning was the Word and the Word was with God and the Word was God." It is read at Christmas because John is explaining how God became a human being at the birth of Jesus.





Please draw your map here . .

Pilgrim Paths





Little Tew

Inside The Church

The first church to be built in Little Tew was a Baptist chapel which was built in 1845. In 1853 the parish church of St. John the Baptist was built in early 14th century style. Initially it was a chapel of ease of the parish of Great Tew, until 1857 when Little Tew was made a separate parish.

This church window has three lights depicting three episodes from the childhood of Jesus;

In each, the people around him recognise his special character from the moment of his birth.



Pause Here to read these next verses from the psalm.
They help us to reflect on how precious and unique each human life is

*For you created my inmost being; you knit me together in my mother's womb.
I praise you because I am fearfully and wonderfully made;
You oversaw this project; the making of me, in confined darkness.
Your sight is like no other sight. Who can see these things but you, LORD?
You made me in secret, and ensured a mystery.
Only you could be praised for creating me.
You marvelled as you watched me take form, aware of all my future days.
You saw me as an eternal creature before I was born.*

Reflect

Allow time to reflect on how special you are and give thanks for your gifts and capabilities. It can help to make a mental note of as many of these as you can.



Continuing

On leaving the churchyard, turn **right** and then bear **left** to continue on through the village. Walk up the hill on the wide grass verge on the **left-hand side**.



Pause Here

Pause at the well-placed wooden bench to rest and look back on the valley. Spend a few moments looking at the detail of a leaf, a blade of grass, the bark of a tree, an insect... Marvel at the detail in nature, in its minutest detail.





Psalm continues

*How amazing are your thoughts, my God.
There are myriads more than I can count;
like grains of sand.
They are intriguingly intricate,
but they are too many...
and still, you hold me.*



Above this point the road bears **right** and narrows,
but continue on it for **150m** until you find a gap in
the hedge on your **left** giving access to a signed
footpath.



Pause Here

Psalm 139 ends with these words;

*Search me, God, and know my heart;
test me and know my anxious thoughts.
See if there is any offensive way in me,
and lead me in the way everlasting.*



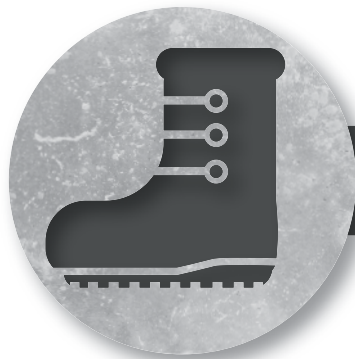
For the remainder of the walk you may like to use the time as the psalm suggests.

Continue

This well-marked path goes diagonally across a large arable field, crossing the top of the hill to the **left** of the communications mast and emerging at a **T-junction**.



Re-cross the B4022 to the track opposite, noting ahead of you, the handsome chimney of the 19th century estate saw mill that used to house a beam engine. Go **through** the wooden pedestrian **gate** to the **left** of the metal field gate. **Cross** the middle of the field, keeping three large trees close on your **right** and the farmstead ahead of you, and head for a **gap** in a remnant of hedge. Bear **left** at the waymark post and, with the hedge on your **left**, continue down to the field gate. **Cross** the farm road and go **through** the wooden pedestrian **gate** opposite.



Turn Right

Turn **right**, follow round the projecting hedge line and head down the hill, just to the **right** of two metal tree-guards, to a gap in the hedge containing another pedestrian gate.



Pause Here

with the destination of the pilgrim path in view.

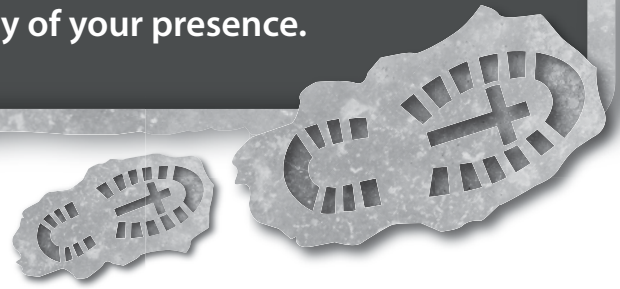


Prayer



Transform me, O God,
that my ways may be merciful,
that my pilgrim journey leads me to compassion.

Transform me, O God,
that my heart may be merciful,
ever open to the joy of your presence.



Finishing

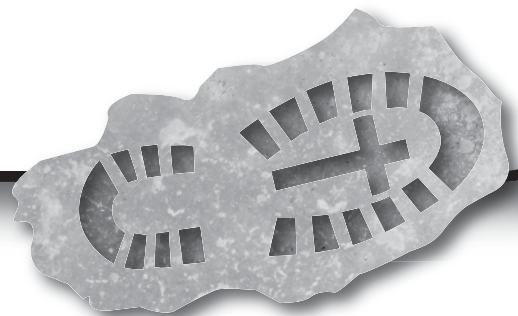
Cross the road and the village green with the picturesque school on your **right**. Ahead of you is a flower shop that also serves coffee and, turning **right** on the lane, you will find the Falkland Arms on your **left** for more robust refreshment.

When you are ready, continue along this lane of thatched cottages, with Great Tew House ahead of you, but turn **right** onto a steep path just past the terrace on your **right**. At the top, turn **left** on the road to return to the church gate.



Great Tew House

Notes



Copyright © Chipping Norton Deanery 2017

Holy Bible, New International Version® Anglicized, NIV® Copyright © 2011

The World Peace Prayer from *This is the Day: Readings and Meditations from the Iona Community*, Neil Paynter, ed., Glasgow, UK: Wild Goose Publications, 2002]

Psalm 139 paraphrase extracts: S. J. Wickham.

